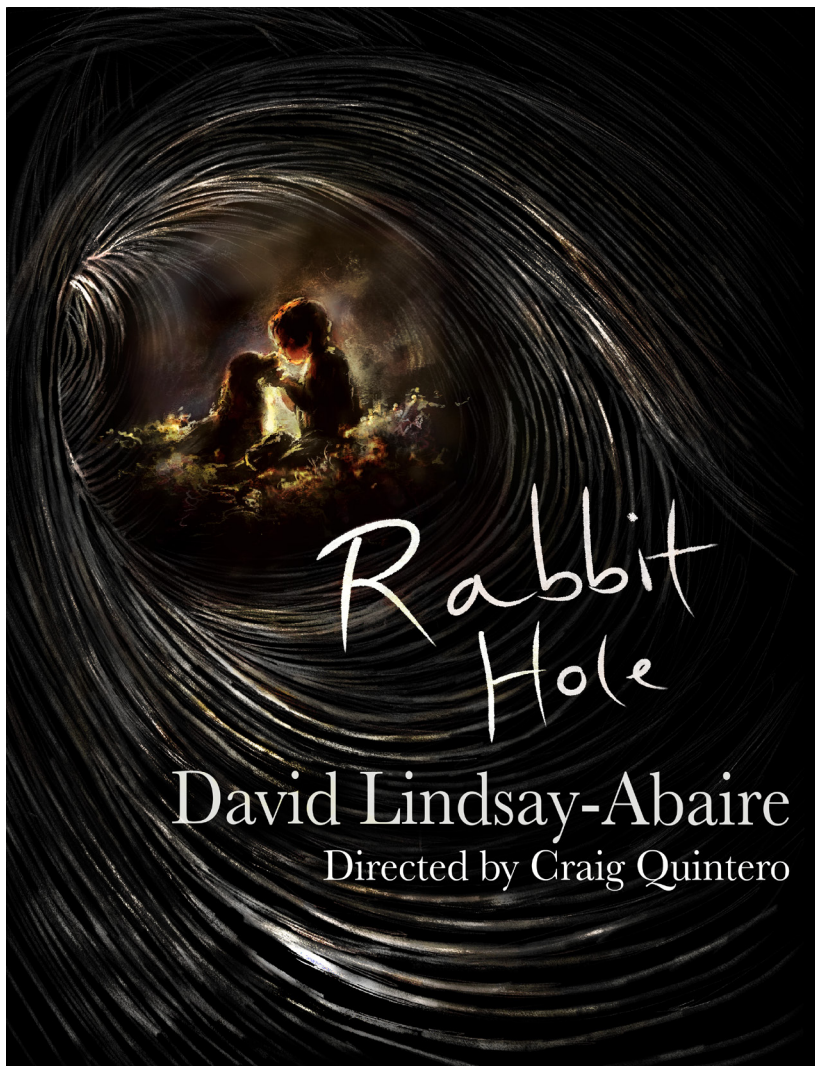


THE GRINNELL COLLEGE DEPARTMENT OF
THEATRE, DANCE, AND PERFORMANCE STUDIES PRESENTS



David Lindsay-Abaire
Directed by Craig Quintero

photo by Lucie Greene, 2022

March 11-13, 2022
Friday-Saturday 7:30 p.m. & Sunday 2:00 p.m.
Roberts Theatre
Bucksbaum Center for the Arts



GRINNELL COLLEGE

There will be one 10-minute intermission.

Please turn off all cell phones and pagers.
No texting, photography, or recording of any kind is
permitted during performance.

Please be advised:
This production addresses infant death,
suicide, and substance abuse.
(Resources available and listed on inside back cover.)



David Lindsay-Abaire's

Rabbit Hole

Rabbit Hole is presented by special arrangement with
Dramatists Play Service, Inc., New York.

Rabbit Hole was commissioned by South Coast Repertory (Martin Benson, Artistic Director; David Emmes, Producing Artistic Director) in Costa Mesa, CA. Originally produced by the Manhattan Theatre Club, Lynne Meadow, Artistic Director; Barry Grove, Executive Producer, at the Biltmore Theatre on January 12, 2006.

Director	Craig Quintero
Scenic/Lighting Designer	S. Benjamin Farrar
Assistant Scenic Designer	Lucie Greene '23
Costume Designer	Erin Howell-Gritsch
Composer	Phukao Prommolmard '24
Sound Designer	McKenna Doherty '22
Technical Director	Erik Sanning '89
Assistant Technical Director	Kate Baumgartner '15
Stage Manager	Kelly Banfield '24



CAST OF CHARACTERS

Izzy	Alyssa Argent '25
Nat	Katie Hidlebaugh '22
Jessie Willette	Reese Hill '24
Howie	Ian A. Macdonald '24
Becca	Anna Wilson '24

SCENES

Place: Larchmont, New York
Time: 2006

Act I
Late February

Act II
Early Mary

SPECIAL THANKS

Jon Baumgartner
Joyce Bergan
Starnes TV and Appliance



“Battle - Cinematic soundtrack music atmo background.wav”
by szegvari of Freesound.org

“Car starting up and pulling away.wav”
by amthomas101 of Freesound.org

“Dog barking.wav”
by mikewest of Freesound.org

“DOG, Dog Whining.mp3”
by josephdeiorio@gmail.com of Freesound.org

“Livin’ for You” by Al Green and Willie Mitchell;
Performed by: Al Green, Al Jarreau, Candi Station;
Courtesy of BMI

“LO-FI White Noise Samples.wav”
by DefySolipsis of Freesound.org

“Machines » Zanussi Z930 drier -
last minutes of drying with buzzer”
by tryl of Freesound.org

“splash.wav”
by angeliqueperdikes of Freesound.org

“Splash, Jumping, A.wav”
by InspectorJ of Freesound.org

“Thunderstorm with Tornado Sirens”
by technoc of Freesound.org

“water » 20110903_splashing.even.more.10.wav”
by dobroide of Freesound.org

Voice Credits:

“Voice of Danny” by Annemarie Alms
“Documentary Narrator 1” by Tommy Smith
“Documentary Narrator 2” by McKenna Doherty



I talked with a number of students and colleagues about how to craft the content warning for *Rabbit Hole*. The nine-word sentence that we arrived at attempts to succinctly summarize the challenging content of this challenging play, but the reality is that its content cannot be neatly summarized or explained. There are not enough words to express the heartbreak of losing a child.

A lot of thought went into choosing to stage David Lindsay-Abaire's 2007 Pulitzer Prize winning play at Grinnell College in 2022. As I sit down to write these remarks, the number of Covid deaths has reached 946,883 in the United States, Ukrainians are engaged in a valiant fight to protect their homeland against the Russian invasion, and less than a month ago, Amir Locke was murdered in his apartment by police executing a no-knock search warrant.

It is overwhelming to try to process this magnitude of human loss.

And as we think about how to address and engage these uncertain times, I am reminded of theatre director Liebe Wetzel's knowing comment that "creating art is not an act of expressing your talent, but a social responsibility." As artists, we are called to face these challenging moments, however uncomfortable they might be, and push forward.

In *Rabbit Hole*, Lindsay-Abaire provides an intimate portrait of a family, the Corbetts, as they grapple with the unexpected death of their son. He wrote the script after family friends suddenly lost their child. In talking about the play, Lindsay-Abaire addressed the recurring nightmare that grounded his work. How would he, a new father at the time, handle this unthinkable accident? How do we persevere in the face of tragedy?

Rabbit Hole successfully captures the complexity of a family working through this process. It includes moments



DIRECTOR'S NOTES

of humor, hope, and genuine connection amidst the almost unbearable sense of loss. In the Author Notes, Lindsay-Abaire reminds the cast and director to “avoid sentimentality and histrionics at all costs.” For Lindsay-Abaire, *Rabbit Hole* is not a tidy play, and he encourages us to “resist smoothing out its edges.”

I am immensely grateful to the cast, crew, and designers for their amazing work to bring this performance to the Grinnell community. It is not easy work, but it is important work. The play teaches us to persevere and be resilient, to find light in the darkness.

Craig Quintero



Alyssa Argent '25 (Izzy) Alyssa is from Chicago and this is her second show at Grinnell College; her first was *Arcadia*. At William Howard Taft High School she performed in *Elephants Graveyard*, *We Will Rock You*, *A Game of Catch*, *Watermelon Boats*, *Little Shop of Horrors*, *Failure-a Love Story*, *The Wolves*, *A Midsummer Nights Dream*, and *Trojan Women*. She has also performed with Windy City Theater in *Grease* and *Legally Blonde*. She hopes you enjoy the show!

Katie/James Hidlebaugh '22 (Nat) Katie is from Marion, Iowa majoring in Sociology with a concentration in Policy Studies. They also work in the Costume Studio, Box Office/House Management, and the Choral Music Library. This is their first acting role at Grinnell College, but they have worked as Costume Crew Chief and House Manager for previous performances. Before coming to Grinnell, they performed in shows at Giving Tree Theater including Penelope Sycamore (*You Can't Take it With You*), Sandy (*The Outsiders*), and Ensemble (*School of Rock*).

Reese Hill '24 (Jessie) Reese grew up in Iowa City, Iowa, where she was a frequent participant in high school and local community theatre productions. When not onstage, Reese likes to draw and volunteer at the animal shelter. Grinnell theatre productions include Hannah Jarvis (*Arcadia*), Director (*Furious*). Community theatre shows include Olive Ostrovsky (*25th Annual Putnam County Spelling Bee*); Marilla Cuthbert (*Anne of Green Gables*); Miranda (*Return to the Forbidden Planet*); assistant director (*Annie*). At City High Theatre, Reese performed the role of Fern Arable (*Charlotte's Web*).



Ian A. Macdonald '24 (Howie) Ian is from Middletown, New Jersey. He plans to major in Psychology. This is not only his first production at Grinnell but also his first time acting at all! Will he pull it off? See for yourself!

Anna Wilson '22 (Becca) Anna is a Psychology & Music double major with a concentration in Neuroscience. She plans on graduating in December of 2022. She also works in the scene shop & box office. Anna is originally from Lakewood, Colorado. In high school, she was an avid participant in theatre, performing in many shows including as Marcy Park in *The 25th Annual Putnam County Spelling Bee*, Albienne in *This Girl Laughs, This Girl Cries, This Girl Does Nothing*, and Mahi in *Honeymoon in Vegas*, and in ensembles for *Sweeney Todd*, and *The Scarlet Pimpernel*. Anna also worked with her high school's stage crew, props crew, and run crew on various shows. At Grinnell, Anna performed in student productions of *East, West*, and *STI: The Musical*. She is grateful for the opportunity to perform for you tonight. Enjoy the show.



Em Huss-Lederman '24 (Wardrobe) Em is from Fort Atkinson, Wisconsin. She plans to major in Anthropology with an undecided concentration. This is her first time being involved with theater at Grinnell and she is very excited!

Emma Kaplan '25 (Mics and Sound Board Operator) Emma is from Evanston, Illinois. She plans on being either a biology or psychology major with the aim of becoming a veterinarian. This is her first show at Grinnell College but she was involved with sound design at her high school for all four years. She started as a mic assistant and worked her way up to being a sound designer. Emma is very excited to continue learning about sound design at Grinnell.

Kyla Miller '25 (Wardrobe) Kyla is from Miami, Florida and will double major in Biochemistry and Theatre and Dance. Kyla has been a part of two productions at Grinnell College including the one act *Poof* and the musical *I Dig You*. Prior to performing at Grinnell, she has been deeply involved in high school and community theatre. Her favorite works include *Beehive the Sixties Musical*, *Nunsense the Musical*, *Willy Wonka Jr. the Musical*, and a one-woman show *Bag Lady*.

Graham Sundström '25 (Light Board Operator) Graham is from Concord, New Hampshire. While he is undeclared, he always enjoys spending whatever time he can in the theater. He looks forward to continuing theater for the next three years. Grinnell Theater productions include run crew (*Do You Feel Anger?*), page turner (*I Dig You*). Concord High School Theater productions include ensemble (*Les Mis*), assistant stage manager (*The Complete Works of William Shakespeare abridged/revised*), ensemble (*The Addams Family*), Marty (*Beyond Us*), lighting collaborator (*26 Pebbles*), writer/director (*The Rest of US*).



**Annemarie Alms '24 (Assistant Stage Manager)**

Annemarie is from New York, New York and is majoring in English. Her involvement with theatre began as Sheep #4 in her church's Christmas pageant, where she sang in baas and brays. In high school, she played Ginette (*Almost, Maine*) and would have played Friar Laurence (*Romeo and Juliet*) if not for the pandemic. Her theatrical debut at Grinnell was as Abigail (*Goody Fucking Two-Shoes*) in last semester's One-Act Festival. Save for an isolated childhood memory of looking for prop-baby-doll-Jesus, this is her first experience in backstage theatre.

Kelly Banfield '24 (Stage Manager) is from Washington, New Jersey and plans on doing an Independent Major in Language, Performance, & Art. He also works in the costume studio & scene shop. This is his first time stage managing and he hopes he does a good job! Grinnell Theatre: collaborator & performer (*INFINITY*), Ezra Chater & Gus Coverly (*Arcadia*), costume co-crew chief (*Do You Feel Anger?*), director (*In the Tank*). George School Theatre: Edward Emerson (*The Night Thoreau Spent in Jail*), ensemble (*RENT*), Puck (*A Midsummer Night's Dream*), costume & makeup crew (*Sideshow*), James Keller (*The Miracle Worker*), props master (*Noises Off*), assistant to music director & puppeteer (*Children of Eden*).

Kate Baumgartner '15 (Assistant Technical Director) has worked as a master carpenter with the Colorado Shakespeare Festival and often serves as a Technical Director for Grinnell High School and Grinnell Community Theatre productions.

McKenna Doherty '22 (Sound Designer) McKenna is from Marytown, Wisconsin majoring in English and Studio Art. She has volunteered in several previous student performances at Grinnell, but *Rabbit Hole* is her first official show. In high school, she played alto saxophone in the pit orchestra



for the musical *Crazy for You*. One day McKenna hopes to work as a children's book author and illustrator. In the meantime, you can find her hitting racquetballs in the BEAR, planning events, or doing a variety of crafts.

S. Benjamin Farrar (Scenic and Lighting Designer)

is a designer for live performance and film as well as a photographer and graphic designer. Benjamin is the resident designer for Soledad Barrio and Noche Flamenca (a professional dance company based in Madrid, Spain). He has worked as a designer and assistant designer in many venues in New York City, including The Public Theater, The Joyce Theatre, The Lortel Theatre, The Pearl Theatre, The Cherry Lane theatre, and The New Victory Theatre. He has designed throughout North America in venues such as The Majestic Theatre in Boston, White Bird in Portland, The McCarter in Princeton, The Royal Conservatory in Toronto, Wolf Trap in Virginia, and The Zellerbach Playhouse in Berkeley. He has also designed for venues in Australia, Mexico, Argentina, Peru, Brazil, England, Scotland, and Switzerland.

Lucie Greene '23 (Assistant Scenic Designer) Lucie is a Theatre and Dance major from the Chicago area. Theatre Cedar Rapids productions include scenic charge artist (*Kinky Boots*), and scenic painter (*Cinderella*). Grinnell College productions include assistant scenic designer (*Do You Feel Anger?*), assistant stage manager and scenic charge artist (*Arcadia*), scenic painter (*Red Velvet*), scenic and prop artist (*Poof!*). DePaul University shows include musician in (*The Dybbuk, or Between Two Worlds*). Buffalo Grove High School performances include scenic co-designer (*Peter and the Starcatcher*), scenic charge artist and musician (*Spamalot, Sweeney Todd, Les Miserables*).



Erin Howell-Gritsch (Costume Designer) has designed all mainstage costumes at Grinnell College since 1999, where she is the resident costume designer. As a Lecturer for the College, she has taught Costume Design, Costume Construction, and Introduction to Technical Theatre. She was previously an Assistant Professor of Theatre at Cornell College. Other design credits include the University of Iowa (Theatre, Dance, Playwright's Festival, Black Action Theatre), Riverside Theatre, RT Shakespeare Festival, RT Young People's Company, Graffiti Theatre, Theatre de la Jeune Lune, Ballet Iowa, and Hurley Dancers. Erin holds a Master of Fine Arts in Theatre Design from the University of Iowa and a Bachelor of Science from Iowa State University.

Parris King-Levine '24 (Assistant Stage Manager) Parris is a sociology major from St. Louis, Missouri. She worked as props master in several shows throughout high school and was part of the props crew for Grinnell's production of *Arcadia*. This is her first time working in stage management, and she is thrilled for everyone to see the outstanding effort that the cast and crew put into this show.

Craig Quintero (Director) As the Artistic Director of the Taipei-based Riverbed Theatre Company, Craig has written and directed over fifty original image-based performances, including productions at Korea's Asia Culture Center (Gwangju), Taiwan's National Experimental Theatre (Taipei), Theatre Mouffetard (Paris), Alte Teuerwache (Mannheim), Fritz (Stuttgart), Theatre Le Funambule (Avignon), Theatre de la Condition des Soies (Avignon), the Esplanade Studio Theatre (Singapore), Telus Theatre (Vancouver), Tiny Alice (Tokyo), KAVC (Kobe), and Robert Wilson's Watermill Center (New York). He is also



a sculptor and installation artist whose work has been shown at the Asian Biennial, Venice Biennale Collateral Events, Kobe Biennale, Taipei Biennale, Taipei Fine Arts Museum, Taipei MOCA, and the Shanghai Museum of Contemporary Art. Craig is a former Senior Fulbright Scholar and a Mellon Foundation Humanities Unbounded Fellow. In 2017 he delivered his TedX Taipei talk “Twenty Years Later: I’ll Still Remember You” at the Hua Shan Art Center. Craig received his Ph.D. in Performance Studies from Northwestern University and is a Professor in the Department of Theatre and Dance at Grinnell College.

Erik Sanning '89 (Technical Director) is a graduate of Grinnell College. He spent the first two years after graduation working as the Technical Director/Lighting Designer for Ballet Iowa. In the summer of '91 Erik was able to return to Grinnell as the Technical Director. In addition, he is also one of the founding members of Grinnell Productions, a semi-professional theatre company that was based in Grinnell. Erik has also been a member of IATSE, the professional stagehands union, since 1990.



Assistant Stage Managers	Annemarie Alms '24 Parris King-Levine '24
Light Board Operator	Graham Sundstrom '25
Sound Designer	McKenna Doherty '22
Assistant Scenic Designer	Lucie Greene '23
Mic and Sound Board Operator	Emma Kaplan '25
Wardrobe	Em Huss-Lederman '24 Kyla Miller '25
Wardrobe Supervisors	Claire Davis '22 Olga Shevelkina '22
Poster Design	Lucie Greene '23
Program Design	Joyce Bergan



ADMINISTRATION

Production Stage Manager

Andrew Jopeck '22

FRONT OF HOUSE

Front of House Staff

Vanessa Figueroa Weston '24

Madeline Fialkov '25

Katie Hidlebaugh '22

Claire Liddle '23

Ryland Rich '22

Anna Wilson '23

COSTUME STUDIO

Costume Storage Coordinator

Olga Shevelkina '22

Stitchers

Kelly Banfield '24

Claire Davis '22

Alec Elston '23

Katie Hidlebaugh '22

Libby Kerensky '24

Olga Shevelkina '22

SCENE SHOP

Properties Storage Coordinator

Carissa Lehning '22

Scene Shop Staff

Kelly Banfield '24

Simon Dungan Seaver '22

Lucie Greene '23

Carissa Lehning '22

A Lim '25

Tim Murphy '24

Linda Pham '24

Moraine Shore '23

David Yawata '22

Anna Wilson '23



Resources Available:

Schvalla Rivera,
Vice President for Diversity and Inclusion,
Chief Diversity Officer
Special Assistant to the President
641-269-3100
riverasc@grinnell.edu

Bailey Asberry, Title IX Coordinator
641-269-4999
titleix@Grinnell.edu

Grinnell Advocates (students) CONFIDENTIAL (24/7)
641-260-1615 (call/text/chat)

Crisis Intervention Services CONFIDENTIAL (24/7)
800-270-1620

UPCOMING EVENTS

Harbingers of Transformation

Dance Ensemble/ACTivate

Collected works choreographed and directed by
Kimberli Boyd, Elliot Mercer, and Celeste Miller
Flanagan Studio
April 28-30, May 1

Student MAP project

The Knight of the Burning Pestle

directed by Caulden Parkel
Roberts Theatre
May 6-8, 2022

Introduction to Acting

THD 117 Students
The Wall Theatre
May 6, 2022

Advanced Performance

THD 317 Students
The Wall Theatre
May 7, 2022

Costume/Craft Construction and Choreography

THD 195 and THD 225 Students
The Wall Theatre
May 11, 2022

www.grinnell.edu
641.269.3064